

# Nottinghamshire Partnership Update

Issue 6 – November 2006



[www.nottinghamshirepartnership.org.uk](http://www.nottinghamshirepartnership.org.uk)

## Message from the Editor

Welcome to the latest edition of the Nottinghamshire Partnership Update. If you have any queries, please feel free to contact me – my details are below. In particular I would welcome any suggestions on how this Update could be improved or whether there are any changes you would like to see to the Partnership website:

[www.nottinghamshirepartnership.org.uk](http://www.nottinghamshirepartnership.org.uk)

The Nottinghamshire Partnership recently met in Worksop and you can read all about what was discussed in this Update. Copies of the agenda, presentations and participant list are available on the Partnership website.

Planning is now under way for the next partnership meeting in January so please contact my colleague Pauline Brentnall, if there is an item you would like to be considered for the agenda. **Telephone Pauline on 0115 9774962 or email: [pauline.brentnall@nottscc.gov.uk](mailto:pauline.brentnall@nottscc.gov.uk).**

Regards

**Alistair McGrady**  
Editor

Tel: 0115 9773932

Email: [alistair.mcgrady@nottscc.gov.uk](mailto:alistair.mcgrady@nottscc.gov.uk)

## The Partnership is 1!

September 2006 marked the first birthday of the Nottinghamshire Partnership. It does not seem that over 12 months have passed since more than 80 partners gathered together at Kelham Hall in Newark to establish the Nottinghamshire Partnership.

We have come a long way in this first year according to Roger Latham, Chief Executive of Nottinghamshire County Council. He says:

“We can justifiably feel proud of what we have achieved in our first twelve months. Getting so many partners to work alongside each other is a great success in itself. We have also put a countywide Community Strategy in place and everyone is now working on delivering the priorities that the public has identified. Furthermore the Nottinghamshire Local Area Agreement started in April and we are striving to deliver some challenging targets which will then trigger reward grant to spend on further service improvements.”

## Partnership Meeting



The fourth meeting of the Nottinghamshire Partnership was held on Wednesday 27 September 2006 and was chaired by Jean Pardoe, Chief Executive at Connexions Nottinghamshire.

# Nottinghamshire Partnership Update

Issue 6 – November 2006

Over 60 people attended the event at the National Fluid Power Centre in Worksop. The main discussion focused on community engagement and the stronger communities' targets within the Local Area Agreement (LAA). Other topics covered included progress made with the Community Strategy and the Local Area Agreement, changes at the Government Office for the East Midlands (GOEM), a pilot project for increasing community engagement and the countywide Sports Partnership.



Jan Sensier, who is the Nottinghamshire Area Director, explained GOEM's key role as supporting delivery throughout the region by using its local and regional intelligence, working with partners, assessing policies and advising ministers. GOEM's strategic objectives include supporting sustainable communities, developing an inclusive society, securing good public services and building a prosperous regional economy.

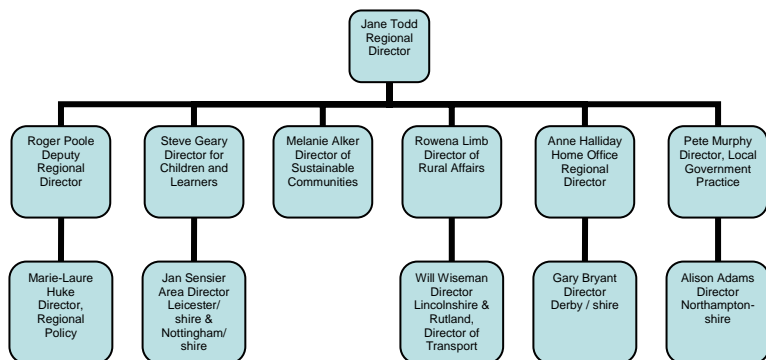
On a national level the Government is keen to see the regional Government Offices play a bigger role in policy development by involving them earlier in the process. This should present opportunities for local authorities and others to be able to influence government policy as well.

Some of GOEM's priorities for 2006/07 in Nottinghamshire include taking the Local Area Agreement forward, tackling high crime areas, addressing health inequalities and making *Every Child Matters* a reality.

GOEM is keen to work together with local partners on improving the well-being of both the county and the region. It can offer assistance from its strategic position as well as being an interface with Whitehall to deliver partner requests to Government.

## All Change at GOEM

The Government Office for the East Midlands has recently undergone a big restructuring exercise and the new senior management structure is set out below:



## Stronger Communities

As part of the Local Area Agreement Stronger Communities targets, we are seeking to increase the number of people who participate in local decision-making and feel able to influence service delivery.

For more information about this briefing please contact Alistair McGrady in the Communities department on 0115 9773932 or e-mail [alistair.mcgrady@nottscc.gov.uk](mailto:alistair.mcgrady@nottscc.gov.uk)

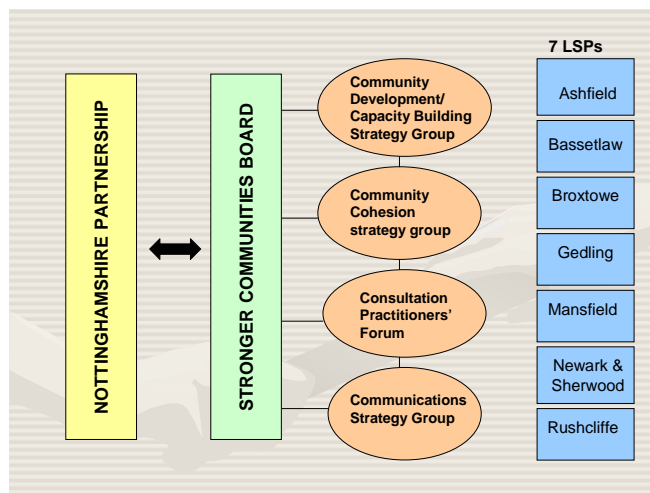
# Nottinghamshire Partnership Update

Issue 6 – November 2006

A Stronger Communities Conference was held on 6 September 2006 with 120 participants attending from a wide range of sectors.

The morning session was spent looking at community engagement indicators whilst the afternoon session involved looking at action planning.

A draft model has now been put together to show how the various strategy groups working on specific aspects of the Stronger Communities block can be integrated. They would report to a Stronger Communities Board whilst linking with the 7 district-based Local Strategic Partnerships to feed into our local communities.



If you want to comment on this model, please contact Tammy Coles at the Nottinghamshire County Teaching PCT. Email: [tammy.coles@gedling-pct.nhs.uk](mailto:tammy.coles@gedling-pct.nhs.uk)

## This Sporting Life

Speaking at the last Partnership meeting in Worksop, Simon Starr, Director of Sport Nottinghamshire, explained how partnership

working with sport can help achieve a variety of key objectives including healthier people and more cohesive communities.

Sport Nottinghamshire's structure includes an East Midlands Sports Board and a County Sports Partnership. Work is currently underway to set up 8 or 9 community sports networks to which can influence strategy at a local level. Partners wishing to get involved will need to work together to generate sponsorship and access grant aid to help develop facilities.

Overall Sport Nottinghamshire's target is to increase participation in sport by 1% per annum. It also intends to create better sporting facilities and to attract and develop more coaches and volunteers. The ultimate aim is to produce sports people who get recognition at national and international levels. Hopefully we may see Nottinghamshire athletes competing in the 2012 London Olympics!

For more information please contact the Sports Director, Simon Starr. Email:

[simon.starr@ntu.ac.uk](mailto:simon.starr@ntu.ac.uk) 



For more information about this briefing please contact Alistair McGrady in the Communities department on 0115 9773932 or e-mail [alistair.mcgrady@nottscc.gov.uk](mailto:alistair.mcgrady@nottscc.gov.uk)

# Nottinghamshire Partnership Update

Issue 6 – November 2006

## LAA Update

### 6 Month Review

The Partnership's first 6-monthly review meeting with the Government of the East Midlands, GOEM will take place on Thursday 16 November. Jan Sensier and her team from GOEM will be examining the Partnership's progress in delivering the LAA. In preparation for this meeting the block leads and key partners met with GOEM officers on Thursday 19 October to look in detail at every priority in the LAA. This process identified the key risks to successful delivery, as well as highlighted issues with the availability of appropriate data. The pre-meeting also allowed partners to tell GOEM about how the LAA had improved partnership working and was already making a real difference to service delivery, for example:

- There has been renewed County involvement in the leisure officers' group. They are now leading on the stretch target to increase the number of Green Flag Awards.
- Connections are being made between the priority to increase the employment rate and to improve adult mental health. A conference on employment and mental health is planned for January.
- Even though a major restructuring of the PCTs across the County has been taking place, a strong partnership within the health sector has been built including good engagement with the voluntary sector.

- The development of the older people's sub-groups in all district LSPs represents a real commitment to this area of work and will help to ensure priorities are contributed to across the County.

The full 6-monthly review report will be posted on the Partnership website following the meeting on the 16 November.

### New Governance Arrangements

The new **LAA Management Group** met for the first time on Wednesday 25 October. The group will focus on the performance management of the LAA and work to ensure that the set outcomes are achieved by the Partnership. The group will be chaired by Phil Lyons from the Mansfield Area Strategic Partnership.

The new **Strategic Partnership Board** will meet for the first time on Tuesday 7 November. The establishment of the board is a significant step for the Partnership as it will provide an executive function for the Partnership. Their first job will be to hold the 6-monthly review meeting with GOEM on Thursday 16 November.

## Diary Date: Next Meeting

The next meeting of the Nottinghamshire Partnership will be held in the **Derek Randall Suite at Trent Bridge Cricket Ground, West Bridgford on Thursday 25 January 2007.**

For more information about this briefing please contact Alistair McGrady in the Communities department on 0115 9773932 or e-mail [alistair.mcgrady@nottscc.gov.uk](mailto:alistair.mcgrady@nottscc.gov.uk)